

**What is the Tumor Tissue Repository and what does it do?**

**Peter Watson and Monica Sager**  
 BCCA-Tumor Tissue Repository (TTR)

TTR 20

**Outline**

- ◆ What is a 'Tumor Tissue Repository' ?
- ◆ How does the BCCA-TTR operate ?
- ◆ Why is the BCCA-TTR important ?
- ◆ Where is the BCCA-TTR going ?

TTR 21

**Biobanks**



TTR 22

---

---

---

---

---

---

---

---



---

---

---

---

---

---

---

---



---

---

---

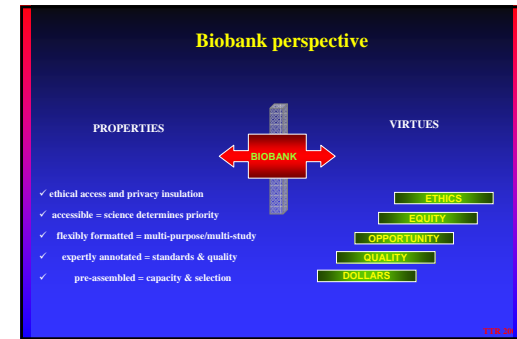
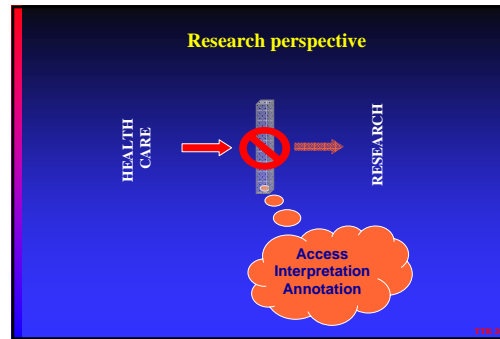
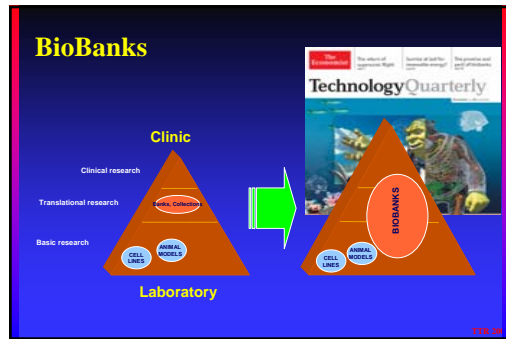
---

---

---

---

---




---

---

---

---

---

---

---

---



---

---

---

---

---

---

---

---



---

---

---

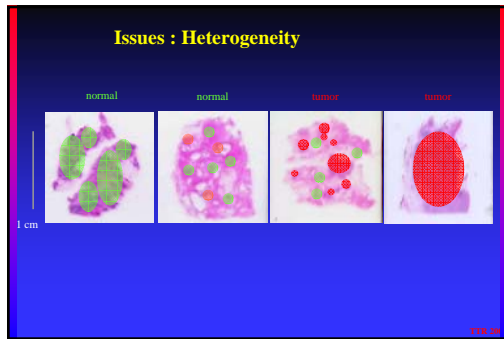
---

---

---

---

---




---

---

---

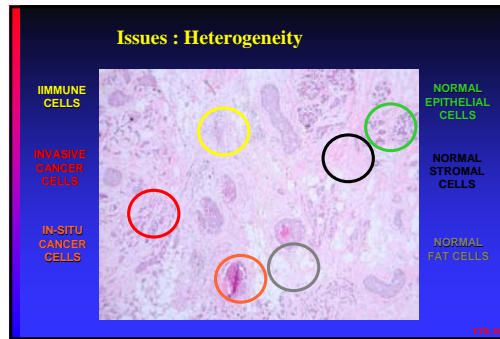
---

---

---

---

---




---

---

---

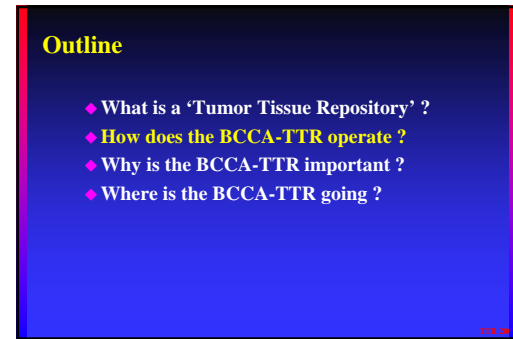
---

---

---

---

---




---

---

---

---

---

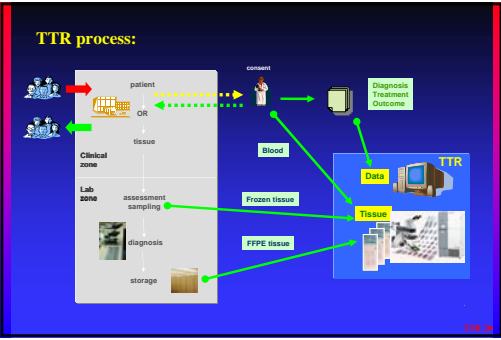
---

---

---

## The Tumor Bank Spectrum

- Networks**
  - CHTN (USA) General network bank
  - GINO (Spain)
  - GISC (USA)
  - NTRAC - HCN (UK) Clinical trial bank
  - EORTC Tumor Bank (Europe)
  - SCOTB (Australia)
- Standalone Banks**
  - IARC (France) Epidemiology bank
  - DCCO-HC/HBSA
  - Biobanking T3
  - BCCA-TTR (Canada) General bank
  - Chernobyl Thyroid Bank (Ukraine)
  - Aarhus Bladder bank (Denmark)
  - SPORes (USA) Site targeted bank
  - Manitoba Breast Bank (Canada)



### BCCA-Tumour Tissue Repository - current status

**Stock:** 1000 cases (3400 frozen + 13,000 blood samples)  
**Materials:** tumour, blood, DNA/RNA products  
**Database:** composition, diagnostic, outcome factors  
**Access:** open principle (currently maturing)

Material Type	Quantity
Frozen tissue	3400
Blood samples	13,000

The pie chart shows the distribution of materials by cancer type:

- Breast
- GI tract
- Ovary
- Prostate
- H&N
- Other

---

---

---

---

---

---

---

---

---

---



---

---

---

---

---

---

---

---

---

---



---

---

---

---

---

---

---

---

---

---

### Outline

- ◆ What is a ‘Tumor Tissue Repository’ ?
- ◆ How does the BCCA-TTR operate ?
- ◆ Why is the BCCA-TTR important ?
- ◆ Where is the BCCA-TTR going ?

---

---

---

---

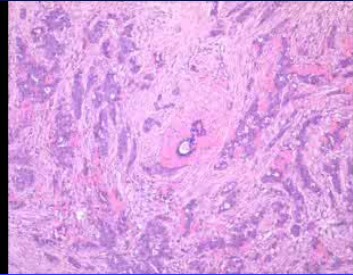
---

---

---

---

### Donor perspective




---

---

---

---

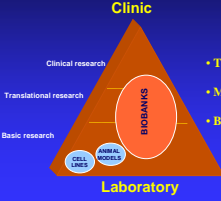
---

---

---

---

### BioBanks - banks, studies, trials



- Target identification for drug therapy
- Marker assessment for diagnosis
- Biological role analysis for validation

---

---

---

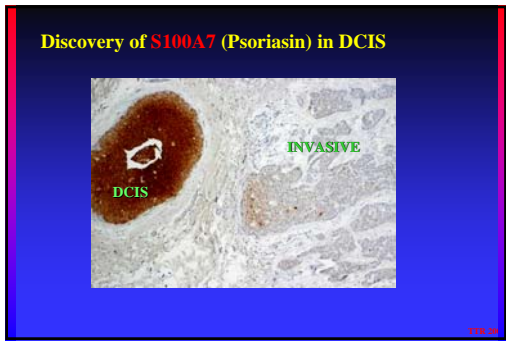
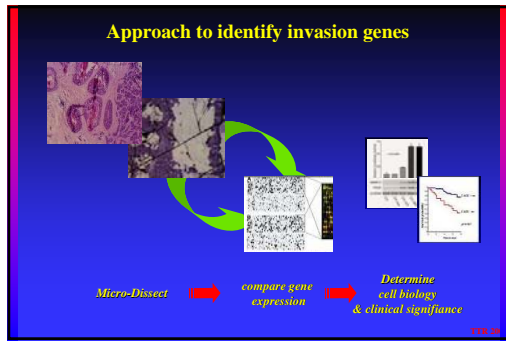
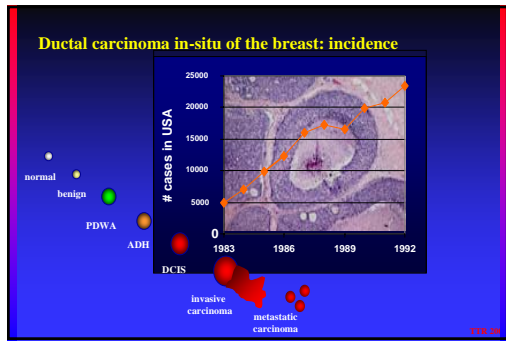
---

---

---

---

---




---

---

---

---

---

---

---

---

---

---



---

---

---

---

---

---

---

---

---

---



---

---

---

---

---

---

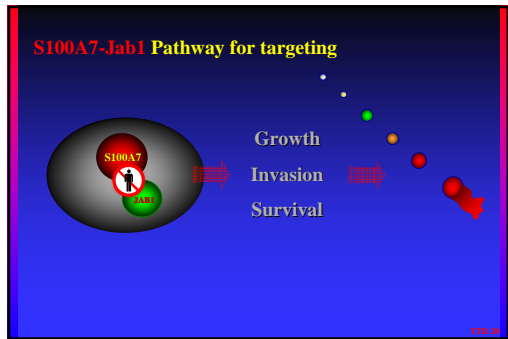
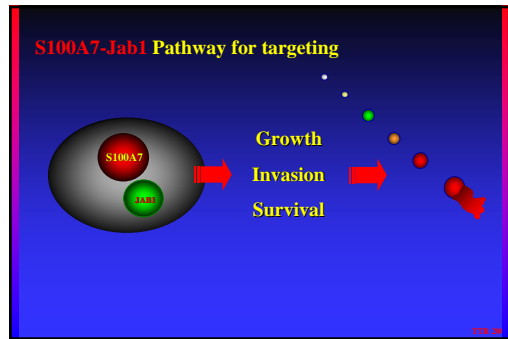
---

---

---

---





- Outline**
- ◆ What is a 'Tumor Tissue Repository' ?
  - ◆ How does the BCCA-TTR operate ?
  - ◆ Why is the BCCA-TTR important ?
  - ◆ Where is the BCCA-TTR going ?
- 120/20

---

---

---

---

---

---

---

---



---

---

---

---

---

---

---

---



---

---

---

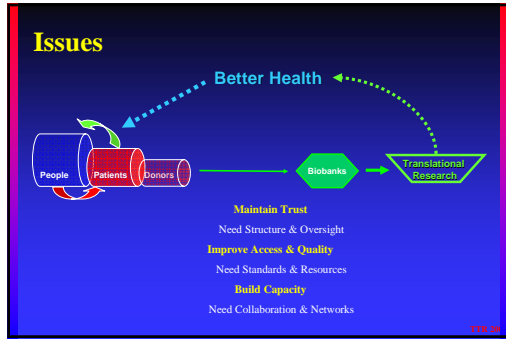
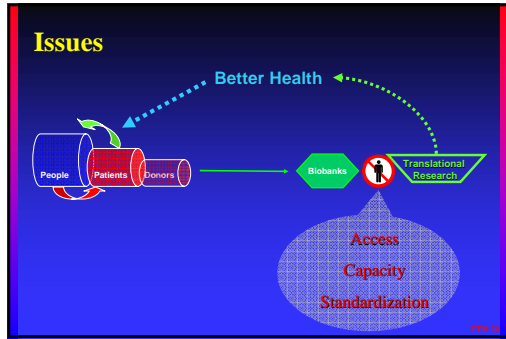
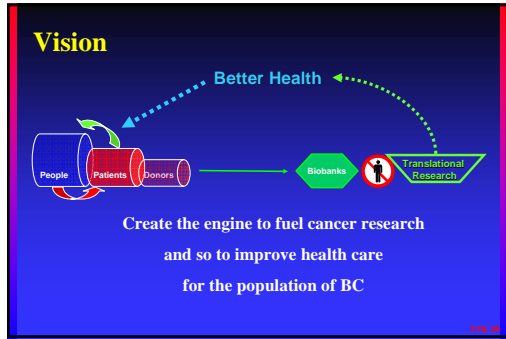
---

---

---

---

---




---

---

---

---

---

---

---

---

---

---



---

---

---

---

---

---

---

---

---

---



---

---

---

---

---

---

---

---

---

---

[www.CTRNet.ca](http://www.CTRNet.ca)

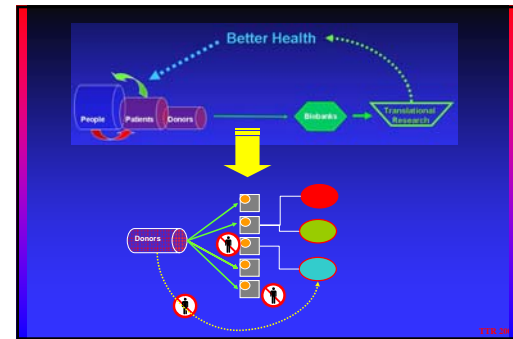
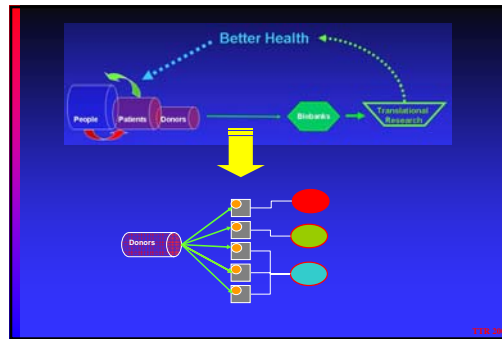
**Network**

- Established fall 2004
- CAPCA governance
- Six founding partners

**CTRNet**

**Goals**

- connect regional banks
- promote national standards
- enhance capacity for research




---

---

---

---

---

---

---

---

---

---



---

---

---

---

---

---

---

---

---

---



---

---

---

---

---

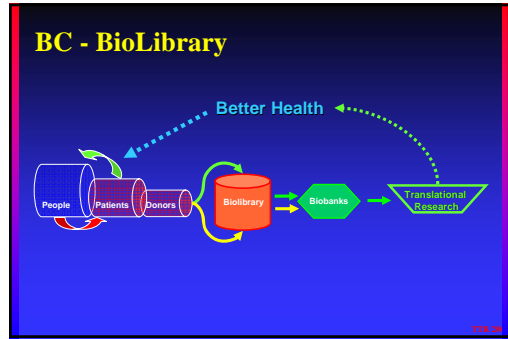
---

---

---

---

---




---

---

---

---

---

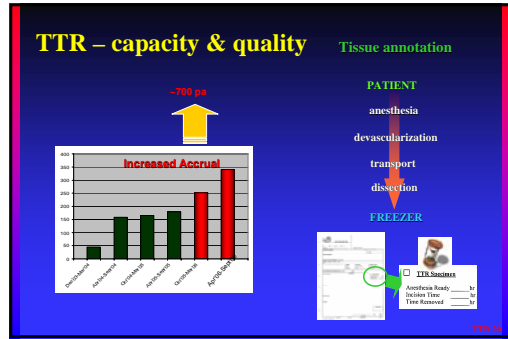
---

---

---

---

---




---

---

---

---

---

---

---

---

---

---

### BCCA-Tumor Tissue Repository (TTR)

Director: Peter Watson  
 Coordinator: Rebecca Barnes  
 Administration: Anne-Marie Braithwaite  
 Consent: Monica Sager  
 Tissue Lab: Sindy Babinski, Christine Fletcher  
 Database: Simon Dee, Nathan Wang

*more than a single*

A small red '120 20' is in the bottom right corner.

---

---

---

---

---

---

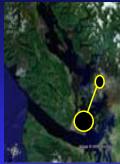
---

---

---

---

## BCCA-Tumor Tissue Repository (TTR)



Community of stakeholders, contributors, custodians,  
the public, patients, healthcare workers, surgeons, nurses,  
pathologists, oncologists, scientists, government, funders of  
science, providers of healthcare services, ethicists, regulators.



*Much  
more  
than a  
single  
team*

TTR 01

---

---

---

---

---

---

---

---